

A man with a shaved head, wearing a white polo shirt, is holding a black Canon DSLR camera with a large lens. He is looking through the viewfinder. The background is a field of tall, golden-brown grass, slightly out of focus. The man is wearing a silver watch on his left wrist and a silver bracelet on his right wrist. On the left chest of his white shirt, there is a circular logo that reads "DANNY BRINK PHOTO FUSION".

Wild Olive  
estate

*Home  
Building*

A DREAM BROUGHT  
TO REALITY

***FIND  
NATURE***

on your doorstep  
at 7 Dams

Life through the lens of  
**Danny Brink**



## Buy, Sell or Rent

Elana Bester  
C 082 493 1367

Nicky Snyman  
C 071 670 3721

Emmuel Snyman  
C 082 377 3634

Barbara Eygelaar  
C 082 885 5961

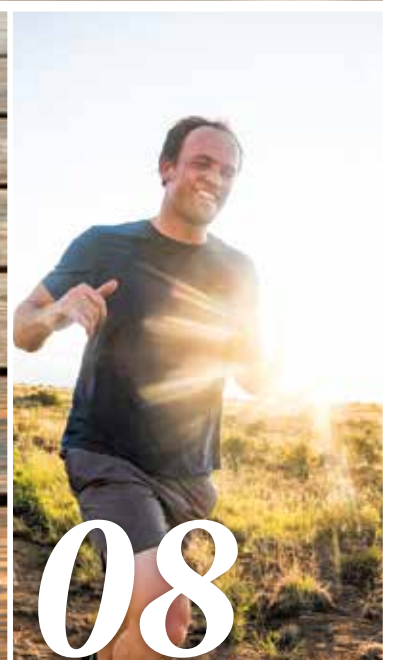
[www.wildoliveestate.co.za](http://www.wildoliveestate.co.za)

Office: 051 5252 500 E-mail: [sales@propertycommerce.co.za](mailto:sales@propertycommerce.co.za)

SHOW HOUSE: 20 Christo Groenewald, Wild Olive Estate, Bloemfontein

## Contents

- 02** – Life through the lens of Danny Brink
- 04** – WODAC oversees Architectural compliance and implementation of the guidelines
- 06** – Wild Olive Estate architecture speaks for itself
- 08** – Nature on your doorstep
- 10** – Map of Wild Olive Estate
- 12** – Benefits of indoor plants in our daily lives
- 14** – Home Building - A dream brought to reality
- 16** – Camera network - The heart of security in Wild Olive Estate



Cover photo:  
Danny Brink

Photographer:  
Pierce van Heerden

Estate Developer:  
Property Commerce  
051 52 52 500  
082 952 7520  
[js@propertycommerce.co.za](mailto:js@propertycommerce.co.za)  
[www.propertycommerce.co.za](http://www.propertycommerce.co.za)

Owners' Association:  
051 433 1396  
079 714 3239  
[admin@wildoliveestate.co.za](mailto:admin@wildoliveestate.co.za)  
[www.wildoliveestate.co.za](http://www.wildoliveestate.co.za)

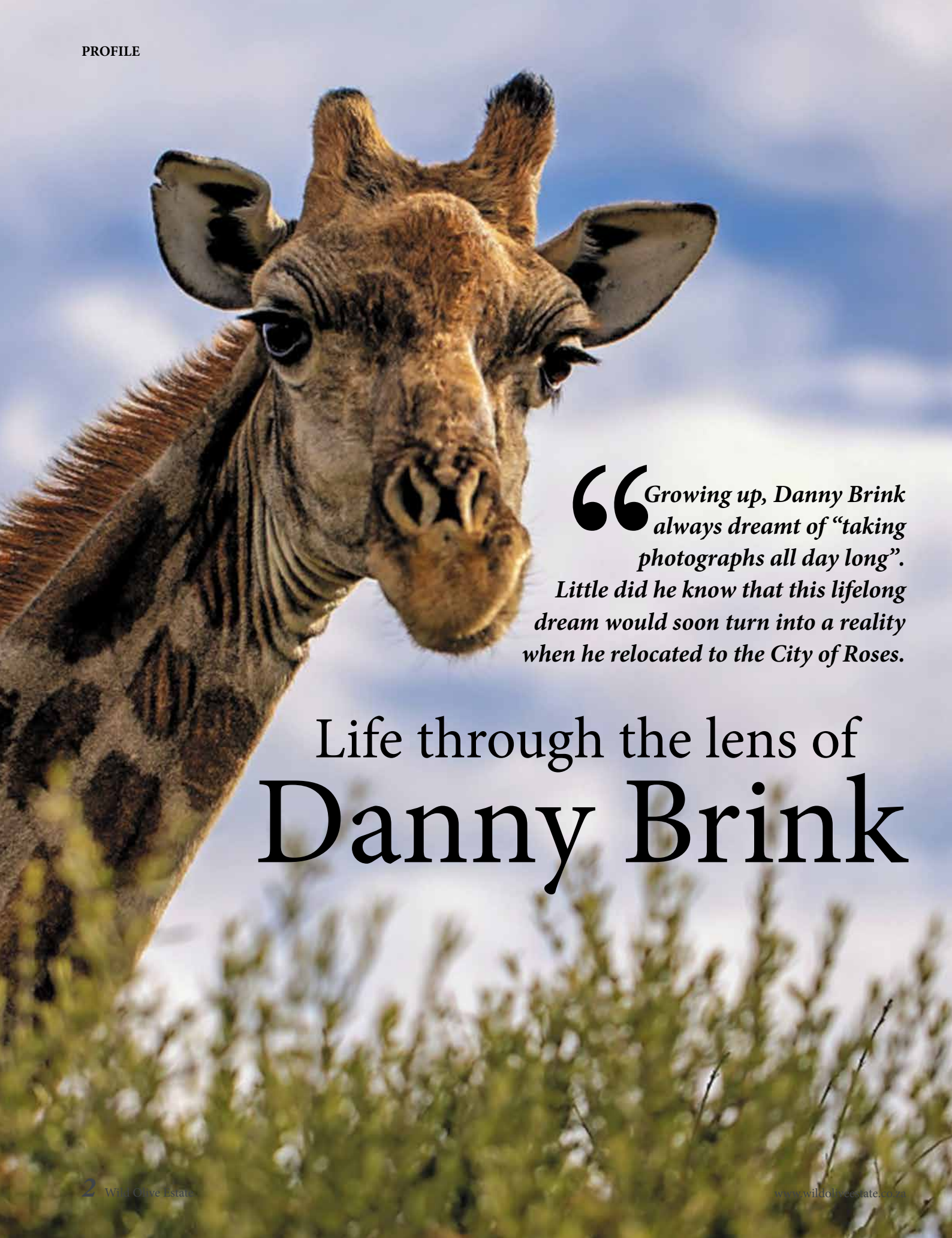
Publishers:  
Mahareng  
Corni Fourie  
051 5050 997

Design:  
Mahareng Studio

Mahareng editor:  
Pieter Delpont

Sales:  
Anne Theron  
074 481 5070





**“Growing up, Danny Brink always dreamt of “taking photographs all day long”. Little did he know that this lifelong dream would soon turn into a reality when he relocated to the City of Roses.**

# Life through the lens of Danny Brink



BORN IN WELKOM in the Free State, the 42-year-old Danny moved back to Bloemfontein after residing in Johannesburg where he worked in telecommunications for Nokia's Level 3 Repair Centre for 13 years. “In 2013 my fiancée had an opportunity to relocate to Bloemfontein. We decided that was time to leave the hustle and bustle of Johannesburg and return to the Free State.”

Upon arrival in Bloem, Danny decided to pursue his dream, photography. He realised that the demand for telecommunication technicians was a lot less than in Johannesburg. “I started focusing on chasing my lifelong dream of becoming a full-time photographer. I enrolled for a photography course presented by Prof. Gert Lambrecht's School of Photography, and soon realised that there was so much more to photography than I could ever imagine.”

Danny described photography as an art through which, when combined with special moments, one can create a story full of memories that will last forever. Outdoor photoshoots had always been a favourite for him as an outdoor person. “I can spend hours in nature walking with my best friend (my fiancée) and our fur child, Chloe, the labrador,” said Danny.

Photography is exciting in many ways, as according to him, not one day or any photoshoot is the same. “And I have the benefit of meeting people through photography,” he shared.

Hence, moving to Wild Olive Estate was an easy decision. “I have the advantage of enjoying an amazing view of the Seven Dams Nature Conservancy. This offers opportunities of enjoying open spaces, blue skies, greenery and the most beautiful sunsets. We have developed a sense of community interaction in so many different ways, strangers have become friends. This is the perfect description of the community of Wild Olive Estate and Seven Dams.”

Danny added, “Security in the estate is top notch, of course, and having the peace of mind that I am able to enjoy the outdoors and still feel safe, is another priority ticked in my living box.”

Apart from having a fond love for photography, Danny also enjoys doing community work. He shared one of his most special moments when he was part of the Demi Lee Moore fundraiser for a 5 year-old cancer patient. “I believe you are born with two hands: one to give and one to receive,” he said.

When Danny is not out and about photographing or enjoying the outdoors, he enjoys playing Playstation 4. “We all have our inner child that we need to connect with every once in a while. I have a deep passion for technology, so I am always on the lookout for those creative tools and applications to keep me busy,” he concluded.

## PROFESSIONAL WIRELESS SECURITY SOLUTIONS



**AJAX KIT 1:**  
1 x Hub control panel  
(SIM 2G, Ethernet)  
2 x Wireless pet immune  
motion detector

**R 4 300** excl vat

- Up to 16 hours of operation on the built-in backup battery
- Apps for managing the security system from wherever you are
- Pet immune motion detectors
- Seamless installation process
- Connection to alarm response centers



**AJAX KIT 3:**  
1 x Hub control panel  
(SIM 2G, Ethernet)  
2 x Wireless pet immune  
motion detector  
1 x Wireless outdoor motion  
detector with anti-masking  
and pet immunity

**R 6 200** excl vat

- Up to 16 hours of operation on the built-in backup battery
- Apps for managing the security system from wherever you are
- Pet immune motion detectors
- Seamless installation process
- Connection to alarm response centers

## INSTALLATION INCLUDED



**AJAX KIT 2:**  
1 x Hub 2 control panel  
with alarm photo verification  
support (2 x SIM 2G, Ethernet)  
2 x Wireless pet immune  
motion detector  
1 x Wireless motion detector  
with visual alarm verification  
and pet immunity

**R 6 900** excl vat

- Up to 16 hours of operation on the built-in backup battery
- Apps for managing the security system from wherever you are
- Pet immune motion detectors
- Seamless installation process
- Connection to alarm response centers

Armed reaction and monitoring enquire about montly fee.



**Contact:** 0861 021 918

**Address:** 18 Coligny St, Park West, Bloemfontein  
**info@nissisec.co.za | www.nissisec.co.za.**





## WODAC oversees Architectural compliance and implementation of the guidelines

WILD OLIVE DESIGN and Architectural Committee, mostly referred to as WODAC, is mandated to guide new designs and enforce the architectural as well as the landscape guidelines. The objective of the guidelines is to fulfil the vision of a development that understands and respects the beautiful landscape of rocky outcrops and grasslands so unique to the Free State by building structures that blend in with the unique habitat.

The importance of quality design, along with exceptional construction quality of buildings and landscaping cannot be overemphasised as the biggest contributor to the estate's vision. Since inception, WODAC has found multiple times that designs and construction did not meet the required quality and this, in some instances, caused repeated plan submissions for the same property before obtaining approval, causing a lot of frustration to the members of the Owners' Association.

Repeated plan submissions were mainly caused by designers not applying the guidelines or where there were major conceptual issues in the design. The designers need to take note of the very specific building widths, fragmentation and ratios specified in the guidelines to encourage simplicity, good proportions, intimate scale, a spatial relation with exterior spaces and courtyards,

proper detailing and sustainability.

WODAC will only accept plan submissions from professional architects or senior technologists with proof of SACAP registration to be presented.

The estate architect, Property Commerce, can be contacted to assist with the design of the property, or WODAC can provide a list of designers who are accredited by the committee. Using a non-accredited designer could potentially cause repeated plan submissions as referred to earlier.

The committee has completed an audit of the estate and is in the process of finalising revised guidelines with the objective to guide designers to present A-grade designs for their clients. The high standard of design is key to increase and protect the capital investment of our owners.

Plan submission procedures will also be split into smaller phases in order to guide the design through effective communication with the committee or the estate architect.

Our website contains all the information required to guide owners through the process of designing a new house, revising existing plans, landscape compliance and the process to be followed and requirements of the resale of a property.

OPTIC **O** EDGE  
OPTICIANS **E** EYEWEAR

**BUY 1** SINGLE VISION, BIFOCAL OR MULTIFOCAL  
AND **GET 1** SUNGLASS FREE



**CASH DEAL**

Single Vision  
Bifocal  
Multifocal

R 980

R 1480

R 1980

OUR DEALS INCLUDES AN EYETEST & 2 X GLASSES (2ND SINGLE VISION PAIR CAN BE DONE AS CLEAR LENSES OR FULL TINTED PRESCRIPTION SUNGLASSES)

**Fleurdal**

Shop asA Checkers Hyper Centre Fleurdal Mall / Tel 051 522 1557

**Langenhovenpark**

Cnr Elias Motsoaledi Street and Dirk Opperman Street / Tel 051 446 0465

**Dan Pienaar**

48 Louw Wepener street / Tel 051 525 9071

# Wild Olive Estate ARCHITECTURE speaks for itself

WITHIN THE GUIDELINES A CLEAR SAMPLE ENCAPSULATE THE ENVISAGED DREAM. THE MAIN FOCUS IS TO CREATE A DESIGNED LIFESTYLE FOR THE PEOPLE USING IT. A LIFESTYLE MUST BE DESIGNED TO BE ENJOYED BY ALL BUT THERE ARE ALWAYS A FEW TIPS THAT WE ARE PREPARED TO SHARE FOR THE INTERIOR OF YOUR DREAM HOME.

## HELENA OLIVIER

### OPEN PLAN

Long gone are the days when the lady of the house was hidden away in her kitchen. Spaces that interact are a reflection of how the family unit has evolved and induce – ironically – more intimacy between family members.

### Paint and paperhanging

If you do follow trends, changing the wall colours and textures is an easy way to update your home's interior. Wallpaper has become popular again, with beautiful contemporary designs available to satisfy a variety of tastes.

### Quality over quantity

Avoid clutter and overstimulated spaces by investing in one or two beautiful pieces of art or furniture. These items will form a base from which your interior design will manifest organically.

### Rhythm

Repetition of a theme will draw the eye, while encouraging the user to explore the room in an organised manner. Rhythm brings about variety and unity simultaneously. Use this method to introduce a particular atmosphere or style to your visitors.

### Stairs

An impressive flight of stairs not only exhibits movement and dynamics in a space, but it can also be an artistic centrepiece. Therefore investing in a well-designed staircase will save you the costs and effort of decorating the adjoining spaces.

### Textures

Juxtaposing various textures will add dimension and interest to your room. Examples: a knitted throw on a leather couch; smooth metal pendants against a stone clad wall; a fluffy rug on a marble floor.

### Unity and harmony

These design principles encompass the others in that it can only be achieved when all the other elements in a space work well together. It is a subjective and subtle perspective on what has been achieved through applying all of the above.

### Vertical gardens

This is a rather new and underestimated trend: to create panels or whole walls from plants. Especially for townhouses and flats, where access to green spaces are **limited**.

### Window dressing

Do away with grandma's curtains and explore the world that roller blinds can offer you. But if you would like some softer edges, ask your architect to incorporate recesses into your ceilings to hide the curtain rails.

This will create an edgier look.

### eXhale

Do not clutter. Breathe.

### You

In the end, your home should be a testimony of you. Do not feel intimidated by magazines or your next door neighbour's alienated taste.

### Zen

In Japanese culture, Zen refers to the practice of meditation to achieve enlightenment and harmony. In interior design, this translates into a unity between the space and the elements that encompass it. It is not a design rule per se, but is mostly associated with minimalism, simplicity and pure lines.

Minimalism requires discipline and focus, but you will soon learn the benefits of leaving the chaos and hustles of everyday life at the doorstep.

# License to KILL



For PREVENTION and CONTROL of:  
Termites • Ants • Cockroaches  
Rats and Mice • Bedbugs • Flying insects

**CLEANPEST**  
**SOLUTIONS**

PEST CONTROL & DISINFECTION

Contact us for a consultation!

082 859 5988 • pest@cleanpestsolutions.co.za





# Nature on your doorstep

THE CONSERVANCY NORTH OF BLOEMFONTEIN,  
NEIGHBOURING WILD OLIVE ESTATE,  
IS A PIECE OF UNSPOILED NATURE WITH  
NATURAL VEGETATION, DAMS AND KOPPIES.

THE FRIENDS OF Seven Dams, a non-profit company, is a public organisation which has cared for the conservancy for the past 28 years and embarked on the mission to keep the conservancy clean, safe and well protected for all residents to use.

You can actively enjoy nature's 'gym' on your mountain bike, trail run and nature walks. Come and enjoy bird watching with more than 160 species identified in the conservancy. Ideal bird watching spots are situated close to the dams.

If you are a resident in Wild Olive Estate, contact the Wild Olive Estate Owners' Office for your access code to the conservancy.

Do not miss the opportunity of visiting your own piece of nature in the heart of Bloemfontein.

Visit [www.7dams.co.za](http://www.7dams.co.za) for more information on the conservancy and follow us on Facebook <https://www.facebook.com/seven.dams> for valuable information on activities and information walks at Seven Dams.



## Why buy into a development?

- Property is a valuable long-term asset.
- No transfer duty.
- VAT is included in the purchase price.
- Interest rates are at 50-year lows
- You only pay your first bond instalment after completion and transfer.
- You get a brand-new property that's never been occupied.
- Good capital growth – your property could be worth a lot more by the time it's built, compared with when you buy.
- Modern Technology – including 3D renders, virtual tours and augmented reality – lets you view your purchase as many times as you like.
- Developments are pre-approved by all the major banks so your path to a home loan is easier.
- Early purchase get great deals at competitive prices.

**Betterbond is South Africa's biggest bond originator.** One application is all it takes. We apply to multiple banks & get the best interest rate deal.

**Get in touch today!**







# Benefits of indoor plants in our daily lives

NICKY SNYMAN

INDOOR PLANTS DON'T just look good. It may seem far-fetched that greenery can have such an advantageous effect on such a simple yet important thing such as our daily lives. Indoor plants enhances the overall appearance of a space; not only do indoor plants add color and liveliness to your space, but they also change physical aspects of the environment in pleasant ways.

They've been shown to boost a person's moods, reduce stress that may be going on in your life, and focus on the here-and-now. They increase creativity and eliminate air pollutions this making a healthier, happier lifestyle. The benefits of indoor plants are of paramount importance for indoor environment quality.

#### Common toxins that plague our indoor spaces:

**Formaldehyde** – commonly found in tissues, serviettes, wood products and synthetic fabrics

**Benzene** – commonly found in adhesives, lubricants, vehicle exhausts and detergents

**Ammonia** – commonly found in cleaning products and fertilizers

**Trichloroethylene** – commonly found in paint, varnishes and household cleaners

**Benzene** – commonly found in adhesives, lubricants, vehicle exhausts and detergents

**Xylene** – commonly found in nail polish, tobacco smoke and paint

**It's true when they say Plants Make People Happy with that said here's Indoor Plants to consider to get you started:**

#### ZZ plant (*Zamioculcas zamiifolia*)

The zz plant is one of the hardiest plants for indoors and the best choice for a corner in the house. It can live without direct light and it's a slow grower, making it a good choice if you want to keep it on the desk at the office or at home to brighten that corner.

#### Pothos plant (*Epipremnum aureum*)

The pothos, which is much tougher than it looks, and can handle pretty much any home condition you throw at it. A nice tip is to let the pothos's vines grow over filing cabinets, walls, or any other accoutrement to make things feel a little less cold.

#### Snake Plant (*Sansevieria*)

Similar to the ZZ plant it's a good low-light plant, and it's a succulent so it doesn't need to be watered often." Also, the snake plant grows vertically, so you don't need to worry about it taking up prime spot in the house.

#### Peace Lily (*Spathiphyllum*)

Always topping lists of best air-purifying plants, the peace lily is another low-light plant that would do well in a home "it's one of the few flowering low-light plants," The peace lily is a pretty easygoing plant, but one thing to keep in mind is that it "doesn't like dryness," and it's best to water when the soil is slightly damp. "It will tell you when it needs water; it starts to wilt over the rim of the pot.

“From boosting our home environment to helping us heal faster there are many to choose from. It's time for a healthier, happier, greener lifestyle.

PAINTSMITHS

Add some *texture*



MIDAS

Earthcote

ENVIROLITE

PLASCON

Shop 18, College Square, 183 Nelson Mandela Drive, Bloemfontein Tel: 051 444 5777  
www.paintsmiths.co.za

Breathing  
**new life**  
into your old furniture

- Upholster, repair & re-upholster all types of sofas and chairs.
- Car Trimming: Seats, Door panels Carpets, Hood lining.
- Manufacture custom sofas & chairs according to your taste.
- Curtains, Throws, Scatter cushions, Rail coverings, Comforters.



**GENIE**  
UPHOLSTERY WORLD

Follow us on Facebook @ Genie Upholstery  
to view our latest creations.

051 435 6239 / 083 273 9292  
info@genieupholstery.co.za 16 Enterprise Street, Hamilton,



# Home Building

A dream brought to reality



“

**“IT TAKES HANDS TO BUILD A HOUSE BUT ONLY HEARTS CAN BUILD A HOME” – Prashanth Savanur**

**EMMUEL SNYMAN**

THE PROPERTY COMMERCE Building and Construction team has made another dream come true.

Dedicated to deliver quality homes, the construction team works in close relationship with a dear friend and client to deliver multiple homes, from foundation to the last roof tile. Homes built to the highest quality, specifications and top end finishes.

Avonia Creek in Wild Olive Estate is a combination of five single-story and five double-story houses. All houses have been designed by our in-house architects.



Visit our offices today to make your dream home a reality. Contact us:  
Emmuel Snyman – 082 377 3634  
Justin Eygelaar – 082 372 9065  
Or visit our website at [www.wildoliveestate.co.za](http://www.wildoliveestate.co.za)

The houses complement modern urban lifestyle with an emphasis on the indoor/outdoor flow and ensure comfort in every room.

The first phase of the development has recently been completed and houses occupied, with the second and third phase already underway.

Our construction team, with combined experience of more than 40 years in construction and the building industry, has again delivered to the promise: to build the houses in time, within budget, and to the highest standards.

*Blinded*  
with envy





**RALPH BLINDS**  
AND DECOR



**BLIND DESIGNS**  
INTERIOR & EXTERIOR

**TOMMY RALPH**

(072) 700 4337 c  
(086) 270 2862 f  
[info@ralphblinds.com](mailto:info@ralphblinds.com)

BLINDS | SHUTTERS | CURTAINS | PATIO BLINDS | SECURITY SHUTTERS

**FOR ALL YOUR  
SANITARY AND  
PLUMBING SUPPLIES  
VISIT OUR SHOWROOM TODAY!**

**LOADS OF  
Specials  
IN-STORE**



[www.waterways.co.za](http://www.waterways.co.za)

**waterways**  
BATHROOM and PLUMBING

**AFTER SALES SERVICE & PROFESSIONAL ADVICE**

**BLOEMFONTEIN:**  
51 NICO VAN DER MERWE STRAAT,  
ORANJESIG | TEL: 051-447 7512



# CAMERA NETWORK

## The heart of security in Wild Olive Estate

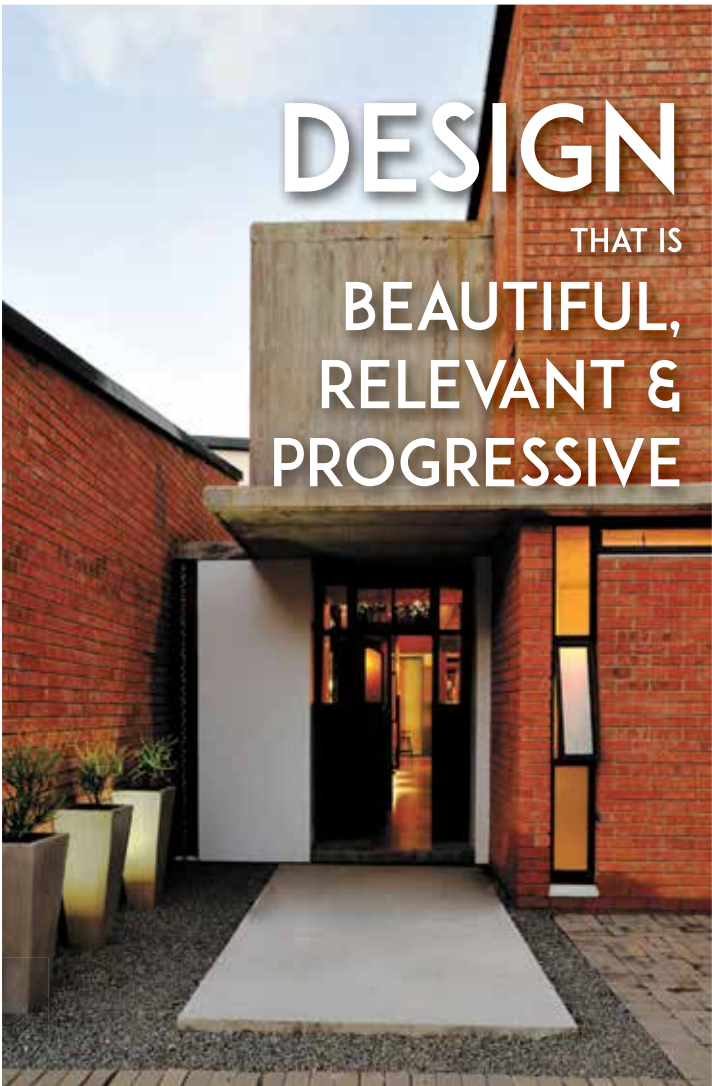


SURVEILLANCE SYSTEMS ARE an essential part of securing Wild Olive Estate. With that said, Wild Olive Estate has successfully added 38 improved cameras to our existing camera system network.

This has indeed improved the safety and security of our residents, estate, staff, visitors and stakeholders. We do not take shortcuts on the integral security measures of the estate. The Wild Olive Estate security fencing is armed with thermal cameras with night vision capabilities, including accurate behaviour analysis such as line- crossing and intrusion detection with high accuracy.

We are dedicated to providing easy-to-use, high-quality camera surveillance systems in Wild Olive Estate. The integration of three monitoring screens, UPS and NVR were made and we can proudly say that the CCTV monitoring centre can now view part of 7 Dams Conservancy and communal areas. We would still like to encourage our residents, tenants and visitors not be lulled into a false sense of security and neglect to take precaution. Residents should secure their personal belongings, homes and complexes. It is critical for our residents to report any suspicious behaviour/actions to our security.

*National Security & Fire is our security service provider responsible for securing our communal areas. However, they have a responsibility to provide response when the need arises. We encourage our residents to make use of our 24/7 emergency services number which can be contacted on cell number: 082 880 4606.*



info@xoarchitects.co.za  
www.xoarchitects.co.za

Sergio Nunes  
Architect  
072 148 0330

Strathearn Farm 2154  
T185 (Kenneth Kaunda)  
Bloemfontein, 9300

Puala Gutter  
Architect  
072 356 6268



**MEDICLINIC HOSPITAAL**  
Kamer G01  
Doktersuite Grondvlak  
Bloedtrek en INR Vingerprikke  
051 - 410 1700 (24Uur)

**ROSE PARK HOSPITAAL**  
Kamer 105  
Bloedtrek  
051 - 502 1500 (24Uur)

**HILLANDALE HOSPITAAL DEPO**  
1ste Vloer, Woodland Hills  
Bloedtrek en INR Vingerprikke  
Maandae - Vrydae  
07:00 - 14:00  
079 360 0144

**COVID TOETSING:**  
President Steynstraat 68 • Westdene • Bloemfontein  
051 410 1700  
Ma – Vry 08:00 – 17:00  
Saterdag & Sondag: 08:00 – 13:00



**WE SPECIALISE IN:**

- Professional Audio
- Musical Instruments
- Music Production & DJ
- Portable Audio
- Projectors
- Lighting
- Gaming & Lifestyle



**ARTIC LIFESTYLE**

**Midea**

*Comfort all year round*

ARTIC LIFESTYLE IS AN APPROVED MIDEA AIRCON INSTALLER

WIDE RANGE OF MIDEA NON-INVERTER & INVERTER AIR CONDITIONERS AVAILABLE. CONTACT ARTIC LIFESTYLE FOR A FREE QUOTATION. PRE WINTER PROMOTION ON PRICING. CONTACT JOHAN: 083 272 2722

make yourself at home [www.mideasouthafrica.com](http://www.mideasouthafrica.com)

**WE SPECIALIZE IN:**

- Televisions
- Projectors & Screens
- DSTV • Pro Audio
- Public Address Systems
- Home Theatre Systems
- Soundbars • Personal Audio
- Audio Accessories

Huishoudelike Toebehore:

- Tuin Meubels • Matras en Basis Stelle • Kombuis Toebehore
- Lugreëraars • Meubels

SUPPLYING, INSTALLING & MAINTENANCE OF PRODUCTS

**ARTIC LIFESTYLE**

4 Milner road, Waverley, Bloemfontein

Tel: 051 4360160/1, Cell: 083 272 2722 - Johan

Warm your home with  
*cozy furniture*

Picture for illustration purposes only

Visit our Furniture-and-Appliance store

**Kraaines**  
furniture | meubels

t: 051 430 3145 • [www.kraainesbloem.co.za](http://www.kraainesbloem.co.za)

Bloem Park Centre • Faan Ferreira Rd • LHP • Bfn

Like our facebook page and see what is available

**PrA**  
colour your world

**STATIONERY ARTS & CRAFTS** | **EDUCATIONAL BOOKS**

Shop 52, Northridge Mall  
C/O Kenneth Kaunda Road & Christo Groenewald Street  
Helicon Heights, Bloemfontein | Store Tel: 051 433 1430

**Blockhouse Shutter**

WHY BLOCKHOUSE SECURITY SHUTTERS?

A good quality, locally produced and beautiful aluminium shutter that has fantastic light and privacy control characteristics as well as being an excellent security barrier.

now installed by  
**TraXdor** Tel 051 432 7070  
[www.traxdor.co.za](http://www.traxdor.co.za)

Watch our video on [www.traxdor.co.za](http://www.traxdor.co.za) for MORE information regarding our range of products!

**ATTRACTION SLIMLINE WINDOW FIXTURE**

- Secured firmly for extra security, no leverage
- 100% dust proof
- No cleaning needed!

**NEW Electronic alarm acts as the first guard**

**Trellis Gate with wireless alarm lock**

**5 YEAR WARRANTY ON WORKMANSHIP, MATERIALS & CORROSION**

**5 YEAR FREE REPAIR PLAN IN CASE OF BREAK IN (T & C'S APPLY)**

**WE WILL MATCH ANY QUOTATION OF A SIMILAR QUALITY PRODUCT!**

**TraXdor**  
YOUR SAFETY OUR PRIDE

E-mail [traxdor@fantic.net](mailto:traxdor@fantic.net) | [www.traxdor.co.za](http://www.traxdor.co.za)

Tel 051 432 7070 | Faks 086 546 2245  
2 Dennis Peckley Street New East End, BFN

Buy direct from the BFN Factory and Save  
INSTALLATION WITHIN 5 WORKING DAYS | FREE QUOTATIONS

**TraXdor**  
Your Security Our Pride

**Security Screen Doors**

SECURITY SCREEN DOORS THAT PROTECT WITH DILIGENCE YET DOES NOT OBSTRUCT YOUR VIEW

**FEATURES UNIQUE TO THE SECURITY SCREEN DOOR:**

- 1. 2 IN 1 BURGLED & INSECT GUARD!** Protection against intruders whilst preventing insects to gain access to the premises.
- 2. CLEAR VIEW!** Provides protection without obstructing your view to the outside.
- 3. UV PROTECTION!** The stainless steel mesh blocks out UV rays for up to 50% while allowing air to flow freely into the protected area.
- 4. CORROSION RESISTANT!** Inland and coastal.
- 5. LOW MAINTENANCE!**

**clearView**

Tel 051 432 7070 • [www.traxdor.co.za](http://www.traxdor.co.za)

**SUNTEK ADJUSTABLE LOUVRE AWNINGS**

10 Jaar Waarborg

Professionele Diens & Vakmanskap

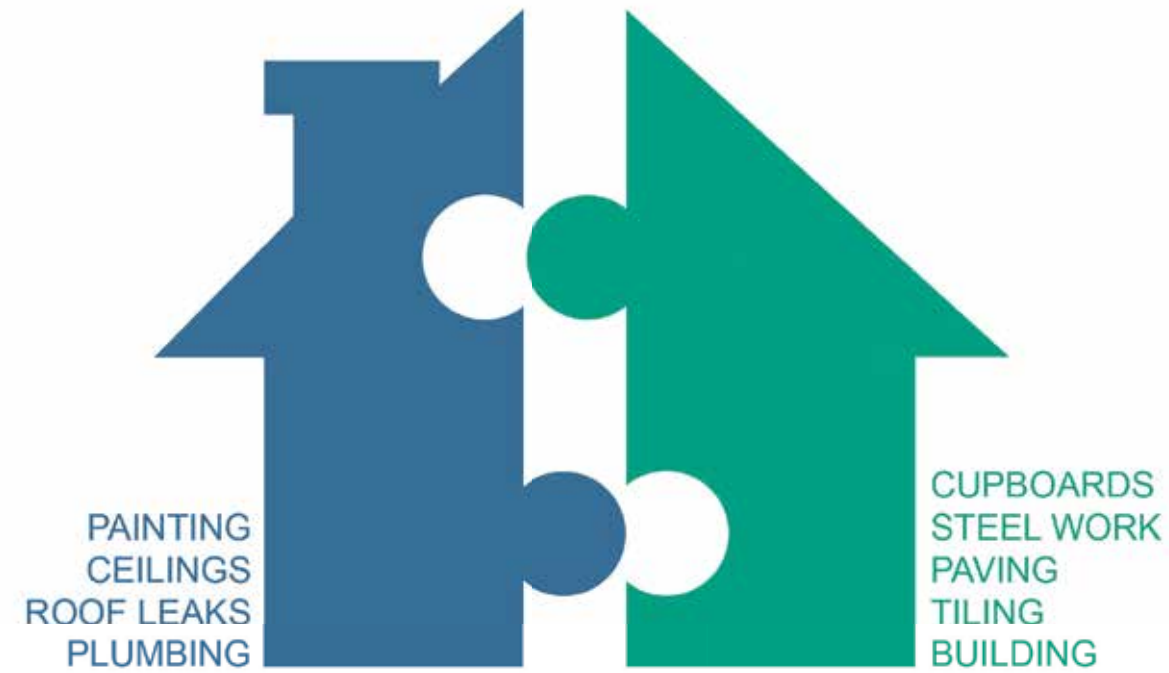
**Vaste & Verstelbare Dakke**

Geen Onderhoud • Kwaliteit Gewaarborg • Direk van die Fabriek

Skakel ons NOU vir 'n gratis kwotasie - Agent Vrystaat & Noord-Kaap

**Tolvry: 0800 203 167**  
**051 432 7070**  
[www.suntekawnings.co.za](http://www.suntekawnings.co.za)





HOPE & STRENGTH

# BARA·YARA

MAINTENANCE CONSTRUCTION

BRAAM ECKARD 082 565 7654  
braameckard@vodamail.co.za  
29 Swartwipenssirkel Woodland Hills



- Various monthly options available from as little as R100 per month
- Various once off options available • Once off Garden Cleaning

**Braam 082 565 76 54 • Rikus 082 786 8814**



Wild Olive  
estate

Property Developers

Architects | Estate Agents | Project Managers | Construction

20 Christo Groenewald, Wild Olive Estate

[www.propertycommerce.co.za](http://www.propertycommerce.co.za)

051 52 52 500 / 082 952 7520



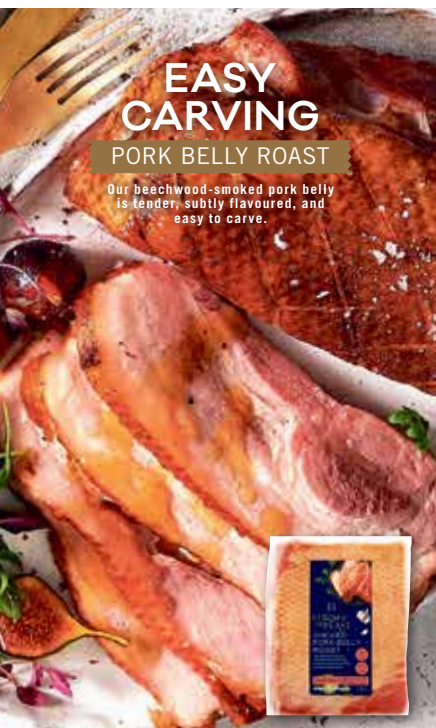
# SOUTH AFRICA'S FIRST MICHELIN STAR CHEF



GIVES CHECKERS' NEW RANGE THE STAMP OF APPROVAL

*"It's indulgence, uncompromised."*

Jan Hendrik van der Westhuizen



## EASY CARVING PORK BELLY ROAST

Our beechwood-smoked pork belly is tender, subtly flavoured, and easy to carve.



## TRIPLE-LAYERED CHOCOLATE & CARAMEL CAKE

CHOCOLATE & CARAMEL CAKE

This decadent, locally crafted cake is made with real cream cheese and comes with a finish-at-home crunchy topping.



## COLD EXTRACTED

EXTRA VIRGIN OLIVE OIL

Enjoy only the finest olive oil, cold-extracted from a blend of 3 select olive varieties, grown and nurtured on the banks of the Breede River.



FORAGE AND FEAST

*Specially Selected*

CAREFULLY SLOW-COOKED

UNIQUE FLAVOUR INFUSIONS

BRINGS OUT THE BEST IN YOUR BRAAIED FARE

# Checkers

better and better